

COLOR CHART

NAIL POLISH



2
Deep Red



4
Texas Red



16
Warm Coral



28
White



34*
French
Beige



59
Hot Red



121
Fuchsia
Flash



130N*
French Pink
Too



135
Orchid



156
Park Ave.
Purple



175
Venom



232
Sparkling
Sherry



240
Free and
Easy



242
Mudd



247
Renew



254
Tira-Mi-Su



275
Wicked and
Wild



276
Red Hot
Nights



278*
Tickled Pink



280*
Ethereal



281*
Sugar Coat
Me



285
Hot Kinky
Pink



286
I'm Raven
About You

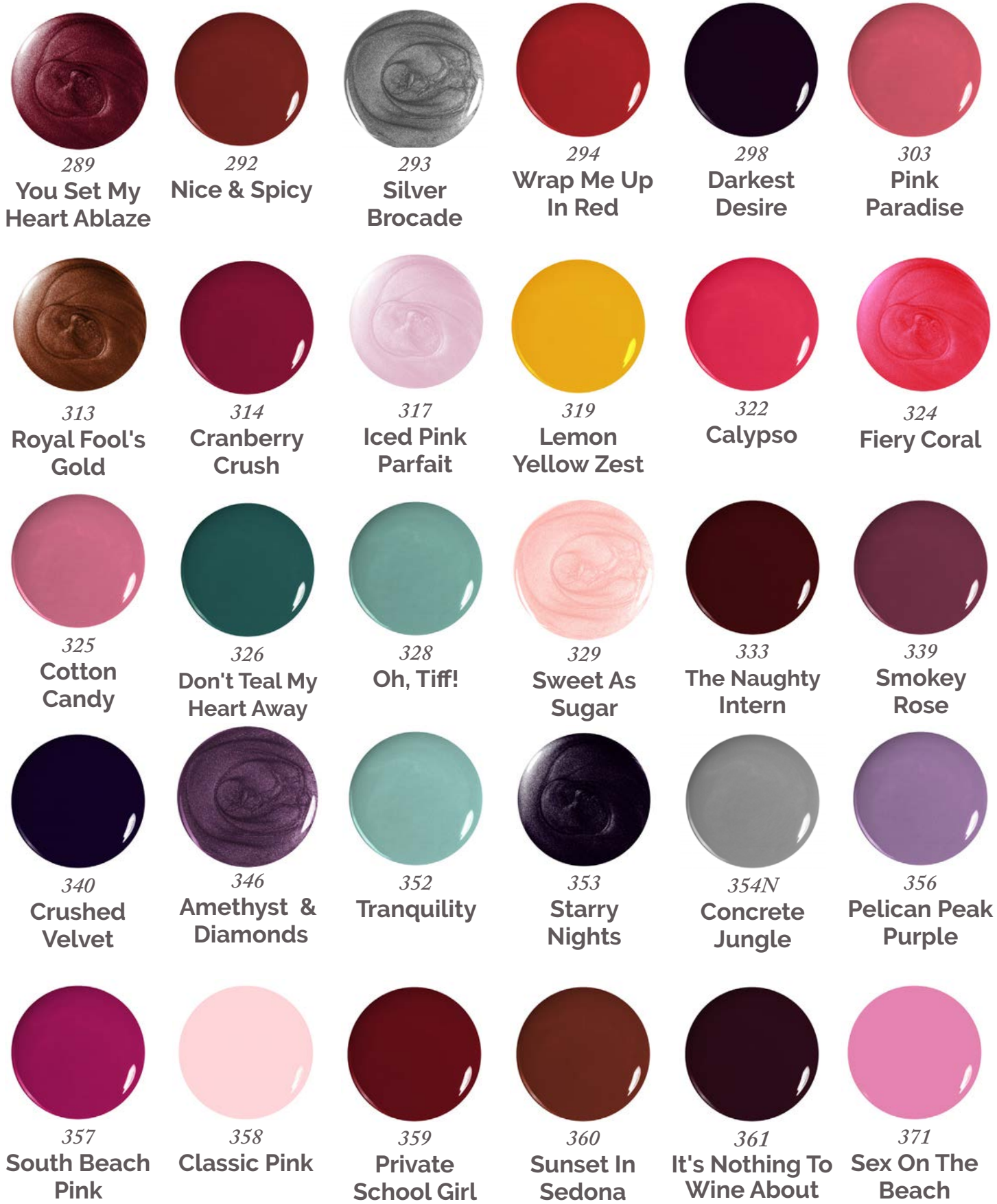


287
Get Red-E
Here I Come

Polish colors and brilliance may vary slightly from actual polish due to photography lighting, settings, and editing of images.

* This nail color changes over time. For example: what may appear purple today might look pink tomorrow.

^N True neons dry to a matte finish. Apply a top coat for a glossy finish. Use with a white base for best results. We suggest #28 or #545.



Polish colors and brilliance may vary slightly from actual polish due to photography lighting, settings, and editing of images.

* This nail color changes over time. For example: what may appear purple today might look pink tomorrow.

^N True neons dry to a matte finish. Apply a top coat for a glossy finish. Use with a white base for best results. We suggest #28 or #545.



372
Bahama
Mama



382
Fireside
Flirtation



383
Park City
Blues



384
Mountain
View Blue



389
Cherry
Blossom



393
Pink Thong
Hong Kong



402
Deep, Dark
Desire



405
Sunshine
and Daisies



406
You're Tutu
Much



407
Corn Silk-y
Smooth



410
Smoke
Signal



411
Lovey Dovey



414
Oz



416
Co-Balt
Deep



418*
French Kiss



419
Peaches &
Cream



420
Hickory
Trickery



423
Barking Up The
Wrong Tree



426
Olive Juice



430
Robin The
Cradle



431
Forever 17



434
Who Are You
Calling Baby?



440
Pretty Plieés



441
Barre None



442
On Pointe



443
Dandelion
Tears



445
Diabolically
Demure



448
Money
Maker



454
Semi
Sweet



456
Bare &
Beautiful

Polish colors and brilliance may vary slightly from actual polish due to photography lighting, settings, and editing of images.

* This nail color changes over time. For example: what may appear purple today might look pink tomorrow.

^ True neons dry to a matte finish. Apply a top coat for a glossy finish. Use with a white base for best results. We suggest #28 or #545.



460
**Royally
Raunchy**



464
**Make Me
Blush**



466
Mint To Be



467
**My Baby
Blue**



469
**Brick It
To Me Gently**



470
**A Lotta
Terra Cotta**



471*
**Fine &
Sandy**



472
**The Dusky
One**



474
**Based On A
Blue Story**



475
**Sitting On
Cloud Wine**



478
**Express Your
Jelly Self**



480
**I Got the
Pick Me Up
Blues**



482
**Million \$
Vermillion**



483
**Burano
Berry**



484
**Loose Lips
Pink Ships**



485*
**Havana
Rose**



486
**Tanning In
Tahiti**



488
**La Boca
Blue**



491
**Lucky In
Atlantic City**



492
**Wood You
Get Wild
With Me**



493*
**A Cape May
Perfect Get Away**



495
Hazy Lilac



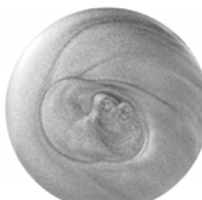
496
**Violet
Uproar**



497
**The Gray
Debate**



499
**Burnt
Caramel**



504
**Does It
Really
Matterhorn**



512
Peek-A-Blue



515
**Sidewalk
Chalk**



518*
Pixie Pink



520
**Plant Your
Sugar Lips Here**

Polish colors and brilliance may vary slightly from actual polish due to photography lighting, settings, and editing of images.

* This nail color changes over time. For example: what may appear purple today might look pink tomorrow.

^ True neons dry to a matte finish. Apply a top coat for a glossy finish. Use with a white base for best results. We suggest #28 or #545.



521
Candy Button
Blue



524
It's About
Thyme



525
Hulla Blue



526
Faerie Pale
Purple



527*
Piggy Toe
Pink



528
Paint The
Brown Red



530
Pewter
Perfect



533
Silver
Lining



534
Fired Up



536
Bloom &
Grow



537
Fleurs Blues



539*
Sheer
Heaven



540*
Pure
Innocence



543
Top Off



547
Rum
Runner



548
Meet Me In
Tangier Dear



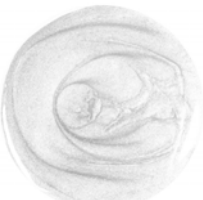
549
How
Insultan



550
True Love
Atlas



553
Maraketch Me
If You Can



556
White Tie &
Tails



558
Fred &
Ginger



559
Million
Dollar
Trooper



561
Flour Power



563*
Good For
Muffin



565
I Only Have
Pies For You



572
Sweater
Weather



575
Sparks Fly



580
Embrace Me



583
Love
Language



587
Tipsy on the
Terrace

Polish colors and brilliance may vary slightly from actual polish due to photography lighting, settings, and editing of images.

* This nail color changes over time. For example: what may appear purple today might look pink tomorrow.

^ True neons dry to a matte finish. Apply a top coat for a glossy finish. Use with a white base for best results. We suggest #28 or #545.



589
Stomping Grapes



591
Free As A Bird



592
Flocking Fabulous



594
Tropic Like It's Hot



595
Can't Be Tamed



597
Lend A Hand



636
Prosecco



60002
Copper Foil



60003
Gold Foil



60009
Taupe Shimmer



60011
Pastel Purple



60017
Marigold



60018
Burnt Orange



60027
Midnight Fright



60028
Lavender Luxury



60029
Mocha



60030
She's A Vamp



60032
Call Me Classy



60037
Bronzed Beauty



60039
Pretty Pink Bikini



60048
Sing the Blues



60054
Fatigued



60055
Blasphemous Blue



60059
Innuendo



60061
Valley Girl



60064
Cinnamon Broom



60069
Koala For A Dolla



60072
Bondi Beach Babe



60074
Mates Before Dates



60080
Melon Mania

Polish colors and brilliance may vary slightly from actual polish due to photography lighting, settings, and editing of images.

* This nail color changes over time. For example: what may appear purple today might look pink tomorrow.

^ True neons dry to a matte finish. Apply a top coat for a glossy finish. Use with a white base for best results. We suggest #28 or #545.



60081*
Palest Pink



60106*^N
Purple
Thunder



60114
Raisin' A
Ruckus



60115*^N
Hippy
Dippy



60116*^N
California
Dreamin'



60119
Putty In My
Hands



60121*^N
Tahitian
Sunset



60122*^N
Hot Lime In
The City



60123*^N
I Pink You're
Crazy



60125*^N
Ultra Violet



60127*^N
Pucker Up



60129
Turquoise
Waters



60130
Sub-Lime



60131
South Sea
Pearl



60132
Red Velvet



60133
Raw



60138
Spoiled



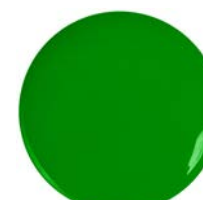
60143
Burnt



60144
Magical
Gold



1702
Fluffy White
Puppy



95214*^N
Lil Toad



99984
Bold Blue

Polish colors and brilliance may vary slightly from actual polish due to photography lighting, settings, and editing of images.

* This nail color changes over time. For example: what may appear purple today might look pink tomorrow.

^N True neons dry to a matte finish. Apply a top coat for a glossy finish. Use with a white base for best results. We suggest #28 or #545.