

COLOR CHART

# NAIL POLISH



2  
Deep Red



4  
Texas Red



16  
Warm Coral



28  
White



34\*  
French  
Beige



59  
Hot Red



121  
Fuchsia  
Flash



130N\*  
French Pink  
Too



135  
Orchid



156  
Park Ave.  
Purple



157  
French  
Vanilla



175  
Venom



228  
Velvet Rose



232  
Sparkling  
Sherry



234  
Purplesque



240  
Free and  
Easy



242  
Mudd



247  
Renew



254  
Tira-Mi-Su



275  
Wicked and  
Wild



276  
Red Hot  
Nights



278\*  
Tickled Pink



280\*  
Ethereal



281\*  
Sugar Coat  
Me

Polish colors and brilliance may vary slightly from actual polish due to photography lighting, settings, and editing of images.

\* This nail color changes over time. For example: what may appear purple today might look pink tomorrow.

^ True neons dry to a matte finish. Apply a top coat for a glossy finish. Use with a white base for best results. We suggest #28 or #545.



284  
**Orange You Sexy**



285  
**Hot Kinky Pink**



286  
**I'm Raven About You**



287  
**Get Red-E Here I Come**



289  
**You Set My Heart Ablaze**



292  
**Nice & Spicy**



293  
**Silver Brocade**



294  
**Wrap Me Up In Red**



298  
**Darkest Desire**



303  
**Pink Paradise**



308  
**Pink Ribbons For M'Lady**



311  
**Mystical Knights**



313  
**Royal Fool's Gold**



314  
**Cranberry Crush**



317  
**Iced Pink Parfait**



319  
**Lemon Yellow Zest**



322  
**Calypso**



324  
**Fiery Coral**



325  
**Cotton Candy**



326  
**Don't Teal My Heart Away**



328  
**Oh, Tiff!**



329  
**Sweet As Sugar**



333  
**The Naughty Intern**



339  
**Smokey Rose**



340  
**Crushed Velvet**



341  
**Mulberry Mayhem**



346  
**Amethyst & Diamonds**



352  
**Tranquility**



353  
**Starry Nights**



354N  
**Concrete Jungle**

Polish colors and brilliance may vary slightly from actual polish due to photography lighting, settings, and editing of images.

\* This nail color changes over time. For example: what may appear purple today might look pink tomorrow.

^ True neons dry to a matte finish. Apply a top coat for a glossy finish. Use with a white base for best results. We suggest #28 or #545.



356  
**Pelican Peak  
Purple**



357  
**South Beach  
Pink**



358  
**Classic Pink**



359  
**Private  
School Girl**



360  
**Sunset In  
Sedona**



361  
**It's Nothing To  
Wine About**



371  
**Sex On The  
Beach**



372  
**Bahama  
Mama**



382  
**Fireside  
Flirtation**



383  
**Park City  
Blues**



384  
**Mountain  
View Blue**



389  
**Cherry  
Blossom**



393  
**Pink Thong  
Hong Kong**



402  
**Deep, Dark  
Desire**



405  
**Sunshine  
and Daisies**



406  
**You're Tutu  
Much**



407  
**Corn Silk-y  
Smooth**



410  
**Smoke  
Signal**



411  
**Lovey Dovey**



414  
**Oz**



416  
**Co-Balt  
Deep**



418\*  
**French Kiss**



419  
**Peaches &  
Cream**



420  
**Hickory  
Trickery**



423  
**Barking Up The  
Wrong Tree**



426  
**Olive Juice**



430  
**Robin The  
Cradle**



431  
**Forever 17**



434  
**Who Are You  
Calling Baby?**



440  
**Pretty Plieés**

Polish colors and brilliance may vary slightly from actual polish due to photography lighting, settings, and editing of images.

\* This nail color changes over time. For example: what may appear purple today might look pink tomorrow.

^ True neons dry to a matte finish. Apply a top coat for a glossy finish. Use with a white base for best results. We suggest #28 or #545.





441  
Barre None



442  
On Pointe



443  
Dandelion  
Tears



445  
Diabolically  
Demure



448  
Money  
Maker



454  
Semi  
Sweet



456  
Bare &  
Beautiful



460  
Royally  
Raunchy



464  
Make Me  
Blush



466  
Mint To Be



467  
My Baby  
Blue



468  
Purple  
Majesty



469  
Brick It  
To Me Gently



470  
A Lotta  
Terra Cotta



471\*  
Fine &  
Sandy



472  
The Dusky  
One



473  
It's a Coy Girl  
Thing



474  
Based On A  
Blue Story



475  
Sitting On  
Cloud Wine



478  
Express Your  
Jelly Self



480  
I Got the  
Pick Me Up  
Blues



482  
Million \$  
Vermillion



483  
Burano  
Berry



484  
Loose Lips  
Pink Ships



485\*  
Havana  
Rose



486  
Tanning In  
Tahiti



488  
La Boca  
Blue



491  
Lucky In  
Atlantic City



492  
Wood You  
Get Wild  
With Me



493\*  
A Cape May  
Perfect Get Away

Polish colors and brilliance may vary slightly from actual polish due to photography lighting, settings, and editing of images.

\* This nail color changes over time. For example: what may appear purple today might look pink tomorrow.

^ True neons dry to a matte finish. Apply a top coat for a glossy finish. Use with a white base for best results. We suggest #28 or #545.



495  
Hazy Lilac



496  
Violet Uproar



497  
The Gray Debate



498  
Goin' Krakatoan



499  
Burnt Caramel



504  
Does It Really Matterhorn



512  
Peek-A-Blue



515  
Sidewalk Chalk



518\*  
Pixie Pink



520  
Plant Your Sugar Lips Here



521  
Candy Button Blue



524  
It's About Thyme



525  
Hulla Blue



526  
Faerie Pale Purple



527\*  
Piggy Toe Pink



528  
Paint The Brown Red



530  
Pewter Perfect



533  
Silver Lining



534  
Fired Up



535  
Spring Has Sprung



536  
Bloom & Grow



537  
Fleurs Blues



539\*  
Sheer Heaven



540\*  
Pure Innocence



543  
Top Off



547  
Rum Runner



548  
Meet Me In Tangier Dear



549  
How Insultan



550  
True Love Atlas

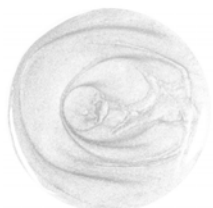


553  
Maraketch Me If You Can

Polish colors and brilliance may vary slightly from actual polish due to photography lighting, settings, and editing of images.

\* This nail color changes over time. For example: what may appear purple today might look pink tomorrow.

^ True neons dry to a matte finish. Apply a top coat for a glossy finish. Use with a white base for best results. We suggest #28 or #545.



556  
White Tie &  
Tails



558  
Fred &  
Ginger



559  
Million  
Dollar  
Trooper



561  
Flour Power



563\*  
Good For  
Muffin



565  
I Only Have  
Pies For You



572  
Sweater  
Weather



573  
Cuddle Me



575  
Sparks Fly



580  
Embrace Me



581  
Afternoon  
Delight



583  
Love  
Language



587  
Tipsy on the  
Terrace



589  
Stomping  
Grapes



591  
Free As A  
Bird



592  
Flocking  
Fabulous



593  
Tou-Can  
Play



594  
Tropic Like  
It's Hot



595  
Can't Be  
Tamed



596  
There Is  
Hope



597  
Lend A Hand



598  
United We  
Stand



600  
Peaceful  
Mind



601  
Be Kind



636  
Prosecco



60002  
Copper Foil



60003  
Gold Foil



60009  
Taupe  
Shimmer



60010  
Eggplant  
Creme



60011  
Pastel  
Purple

Polish colors and brilliance may vary slightly from actual polish due to photography lighting, settings, and editing of images.

\* This nail color changes over time. For example: what may appear purple today might look pink tomorrow.

^ True neons dry to a matte finish. Apply a top coat for a glossy finish. Use with a white base for best results. We suggest #28 or #545.





60017  
Marigold



60018  
Burnt  
Orange



60027  
Midnight  
Fright



60028  
Lavender  
Luxury



60029  
Mocha



60030  
She's A  
Vamp



60032  
Call Me  
Classy



60037  
Bronzed  
Beauty



60039  
Pretty Pink  
Bikini



60040  
Beach  
Resort Blue



60048  
Sing the  
Blues



60054  
Fatigued



60055  
Blasphemous  
Blue



60059  
Innuendo



60061  
Valley Girl



60064  
Cinnamon  
Broom



60069  
Koala For A  
Dolla



60072  
Bondi Beach  
Babe



60073\*  
Tasmaniac



60074  
Mates  
Before Dates



60080  
Melon  
Mania



60081\*  
Palest Pink



60106\*<sup>V</sup>  
Purple  
Thunder



60114  
Raisin' A  
Ruckus



60115\*<sup>V</sup>  
Hippy  
Dippy



60116\*<sup>V</sup>  
California  
Dreamin'



60119  
Putty In My  
Hands



60121\*<sup>V</sup>  
Tahitian  
Sunset



60122\*<sup>V</sup>  
Hot Lime In  
The City



60123\*<sup>V</sup>  
I Pink You're  
Crazy

Polish colors and brilliance may vary slightly from actual polish due to photography lighting, settings, and editing of images.

\* This nail color changes over time. For example: what may appear purple today might look pink tomorrow.

<sup>V</sup> True neons dry to a matte finish. Apply a top coat for a glossy finish. Use with a white base for best results. We suggest #28 or #545.



60125\*V  
**Ultra Violet**



60127\*V  
**Pucker Up**



60129  
**Turquoise Waters**



60130  
**Sub-Lime**



60131  
**South Sea Pearl**



60132  
**Red Velvet**



60133  
**Raw**



60135  
**Booty Call**



60138  
**Spoiled**



60140  
**Toasted**



60142  
**Send Nudes**



60143  
**Burnt**



60144  
**Magical Gold**



1702  
**Fluffy White Puppy**



95214\*V  
**Lil Toad**



99984  
**Bold Blue**

Polish colors and brilliance may vary slightly from actual polish due to photography lighting, settings, and editing of images.

\* This nail color changes over time. For example: what may appear purple today might look pink tomorrow.

^ True neons dry to a matte finish. Apply a top coat for a glossy finish. Use with a white base for best results. We suggest #28 or #545.